

2 Travis Co.

ne

152/1

2246

Travis Co. **SCRIP.**

Abst. - 2246

Daniel Bayford

53-1280 Acre.
School
54-~~1280~~ 1441 Acre.

Certificate No. 186

See Transfer in 900 Travis
3^d class.

Both Surveys were
on map of Travis County
according to Surveyors
Statement & sketch
June 11/86
July 1/87 O. von Rosenberg

Patent Sur No. 50 to

Carl Mayer of
July 6/87 Shelley

Patent July 13/87
623-16736

Mgl.

84718
Held. ptes. Rea.

CONTENTS.

No. 1. Certificate.

Nos. 2 and 3. Field Notes.

No. 4.

Trav. 20/83.

Foreword.

Transfer.
March 9/85.
Daniel

1. Cir. G. W. M. W.
May 1/86.
Daniel

2. Cir. F. M. W.
May 1/86.
Daniel

3. Cert Sketch & Explain.
May 31/86.
Daniel

W. M. W.
C.

Carl Mayer



CONFEDERATE SCRIP.

No. 186

1280 Acres.

GENERAL LAND OFFICE,

Austin, Texas August 1881

This is to Certify, That Samuel Heafford is entitled to have surveyed by any legally authorized surveyor, upon any of the vacant, unreserved and unappropriated public domain of the State of Texas, Twelve Hundred and Eighty Acres of Land in accordance with the provisions of an Act entitled

"An act granting to persons who have been permanently disabled by reason of wounds received while in the service of this State, or of the Confederate States, a land certificate for twelve hundred and eighty acres of land," approved April 9, 1881, said Samuel Heafford having made the proof required by said act.

A like amount of land shall be located by the use of this Certificate for the benefit of the permanent School Fund, before either location shall be patented, and both locations shall be made upon any of the Public Domain of Texas not reserved by law from location.

In Testimony Whereof, I hereunto set my hand and affix the impress of the seal of said office, the date first above written.

A. C. Nash

Commissioner.



*1280 acres
Patented Aug 1881*

Austin Texas Aug. 2^o 1881
 For value received Shueby transfer and conveyance
 to George J. Hayford and Kirby Hayford
 all my right, title and interest in and to the
 within land certificate for 1780 and of land
 No 186

S. Hayford

The State of Texas--County of Travis.

BEFORE ME, Frank Brown Clerk of the County Court, on this day
 personally appeared S. Hayford known to me
 (proved to me on the oath of _____)

to be the person whose name is subscribed to the foregoing instrument, and acknowl-
 edged to me that he executed the same for the purposes and consideration there-
 in expressed.

Given under my hand and seal of office, this 2^o day of August

A. D. 1881

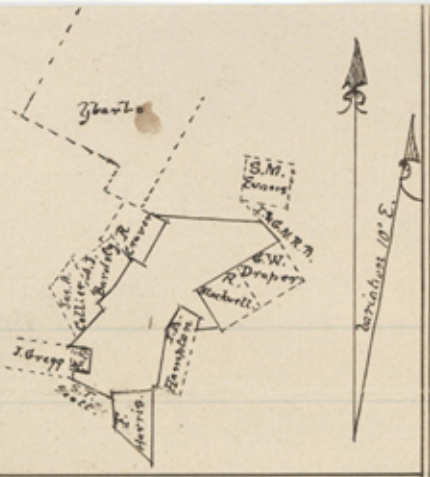
Frank Brown
 Clerk County Court, Travis Co., Texas.

By _____ Deputy.



1881
 Given 1881
 Travis Clerk
 Sam L. Dearford
 1880
 1880
 Frank Brown 20/83
 J. M. Brown
 Chf. clk

S. Hayford
 1881



State of Texas
 Travis County.

Survey no 53

Plat and

Field Notes of a survey of
 1280 acres of land, surveyed by
 virtue of Confederate Land Scrip
 No. 186 issued to Samuel Hayford

on the first day of August A.D. 1881 by W. C.
 Walsh, Comr of the Genl Land Office State
 of Texas — said land being situated on the
 waters of Cross Creek in said County of Travis,
 about _____ miles in a Northwesterly direction from
 Austin, and more particularly described as follows,
 to wit:

Beginning at the N.W.
 corner of the F. Harris survey; (bearing identified)
thence with the N. boundary of said Harris survey,
 N85° E 860 vs. to N.E. corner of same; (bearings identified). thence
 N47° E 132½ vs. to S.W. corner of S.A. Hampton survey; (bearings
 identified). thence
 N30½ E 1200 vs. with W. boundary of Hampton to corner of
 same; thence with N.W. boundary of same,
 N33½ E 520 vs. to N. corner of Hampton; (bearing identified).
thence, with N.E. boundary of Hampton,
 S60° E 440 vs. to N.E. corner of same; thence

- S 15° W 240 vs. to stone mound in S. E. boundary of same; thence
- N 85° E 500 vs. to stone mound in S. W. boundary of R. Blackwell; thence
- N 30° W 942 vs. with S. W. boundary of Blackwell to N. W. corner of same; (bearing identified). thence
- N 60° E 1930 vs. with N. W. boundary of Blackwell and G. W. Draper to N. corner of Draper; (bearing identified). thence with S. W. boundary of R. R. lands,
- N 27½° W 570 vs. to stone mound; thence
- West 2343 vs. to a corner in N. E. boundary of R. Craven; thence with said N. E. boundary
- S 60° E 288 vs. to E. corner of same; thence
- S 30° W 950 vs. with said Craven's S. E. boundary to S. corner of same; thence
- N 60° W 384 vs. with Craven's S. W. boundary to corner in N. E. boundary of A. J. Bardsly; thence with said N. E. boundary,
- S 35° E 115 vs. to E. corner of Bardsly; thence
- S 30½° W 693 vs. with S. E. boundary of Bardsly to corner of same; (bearing identified). thence
- S 45° W 402 vs. to stone mound, S. corner of Bardsly in ^{pt} N. E. boundary of Jas. A. Collier survey; (bearings

TRAVIS-3-1521

identified).

thence with said N.E. boundary,
S 30° E 205 vs to E. corner of Collier survey, in Cross Creek;
thence, with S.E. boundary of Collier,
S 44° W, at 851 vs S. corner of Collier; (bearing identified),
at 1030 vs corner in the N. boundary of the J.
Gregg survey; thence with N. boundary of
Gregg and C. H. Ballard surveys,
S 80° E at 98 vs W. corner of Ballard;
at 181 vs N.E. corner of Gregg
at 488 N.E. corner of Ballard; thence
S 10° W 470 vs with E. boundary of Ballard to S.E. corner
of same; thence
N 80° W at 307 vs intersect S. boundary of Gregg; thence
S 10° W 170 vs to S.E. corner of Gregg; thence
S 60° E 940 vs with N.E. boundary of S. J. Scott survey
to corner in W. boundary of F. Harris; thence
N 5° W 130 vs to the beginning.

Survey completed June 15th A.D. 1882.

J. J. White
G. W. Draper } Chairmen.
W. Pope }

I Jno E Campbell Surveyor for Travis County
do hereby certify that the foregoing survey was
made in the field and that the field notes
of same are recorded in Book

H page 192 at Austin
March 19th 1853

Jno. E Campbell
Surveyor for
Travis County

2 Files - 1521
Savie Scrip -

Savie Wayford

Filed Notes.

Over

1853

Filed. Mar 20/53

Robertson

Filed

Cancelled by
corrected field notes

30 am

Cancelled by
corrected field notes
12/13

1908

1853

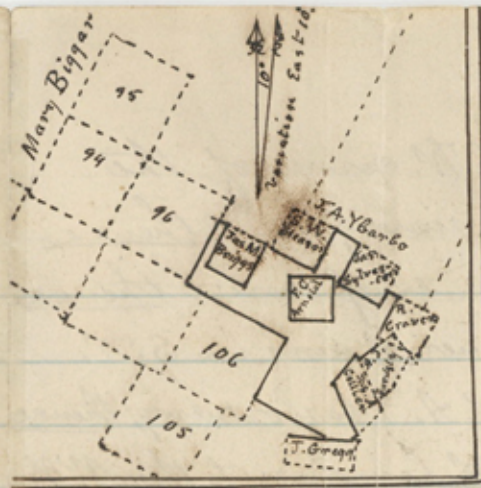
11

Chairmen,

G. J. Hayford,
S. Hayford
W. Pope
Jas. M. Briggs.

Jno. E. Campbell surveyor for Travis County do hereby certify that the foregoing survey was made in the field and that the field notes of same are recorded in Book H page 193 at Austin March 19th 1883

Jno. E. Campbell
Surveyor for
Travis County



State of Texas }
Travis County }
Survey no 34
Plat and Field
Notes of 1380 acres
of land surveyed
for the State of
Texas by virtue of

Confederate Land Scrip No. 186, issued to Samuel Hayford on the first day of August A. D. 1881 by W. C. Walsh, Comr. of the Genl. Land Office State of Texas — said land being situated on the waters of Cross Creek in said County of Travis, about _____ miles in a Northwesterly direction from Austin, and more particularly described as follows, to wit: Beginning at the N.W. corner of Jas. M. Briggs' survey, a stone mound in prairie — thence S30°N 950 ms. to Briggs' S.W. corner; thence S60°E 950 ms. to Briggs' S.E. corner; thence N30°E 950 ms. to Briggs' N.E. corner; thence

S48½°E 85 ms to the S.W. corner of the
 S.W. Gleason survey; thence
 S60°E 950 ms to S.E. corner of same; thence
 N30°E 950 ms to N.E. corner of same in S.W.
 boundary of J.A. Zbarbo survey; thence
 S60°E 570 ms with said S.W. boundary to the N.W.
 corner of the Jas. Sylvester survey; thence
 S30°W 950 ms to S.W. corner of Sylvester; thence
 S60°E 950 ms to S.E. corner of Sylvester; thence
 N30°E 340 ms with S.E. boundary of Sylvester to
 corner of J.A. Zbarbo survey (bearing identified)
 S60°E 400 ms with S.W. boundary of Zbarbo to a
 stone mound N.W. corner to R. Craven's
 survey (bearing gone. Corner identified
 by measurement each way to Zbarbo corners); thence
 S30°W 950 ms to R. Craven's S.W. corner; thence
 S60°E 75 ms to corner in N.W. boundary of A. J.
 Barely; thence
 S55°W 730 ms to corner in N.E. boundary of Jas.
 A. Collier; thence

N30°W 85 ms to N. corner of Collier; thence
 S40°W 750 ms to N.W. corner of Collier; thence
 S25°E 1205 ms to S. corner of Collier; (bearing iden-
 tified); thence
 S44°W 179 ms to corner in N. boundary of J.
 Gregg; thence
 N80°W 446 ms to corner in the N. boundary of
 Gregg; thence
 N60°W 1792 ms to corner in S.E. boundary
 of No. 106 D. & W. R. R. survey; thence
 N30°E 1620 ms to N.E. corner of same; thence
 N60°W 2380 ms to S.E. corner of No. 96 D. & W. R. R.
 Survey; thence
 N30°E 1462 ms to corner in S.E. boundary of
 said No. 96; thence
 S60°E 181 ms to the beginning - containing
 1280 acres of land exclusive of
 the F. C. Arnold survey of 160 acres,
 which is included in the above
 limits, but does not touch them.
 Survey completed June 20th 1882.

TRM 1-5-3-1501

3) Dec. 1621

Francis Serif

Samuel Bayford

Filed Notes

1280 - Series

Filed Mar. 20/83
Det Robinson

Ch. cell

These for notes include a 160 acre
claim in the name of J. O. ...
and to call for the same and so
can record it as to by ...
This seems to be done, so that the
all notes will contain only what
they are entitled to claim -
do, don't claim ... 84 - ... W 42.
May 14/83 J.H.H.

Cancelled by
me dated 1/2/83

1286
1291
1292

State of Texas }
 County of Travis }

Corrected field notes of
 a survey made for S Hayford for 1280 ac
 of land, by virtue of Confederate Scrip
 no 186 issued on the 1st day of
 Aug 1881 by W. C. Walsh Comr Gen
 Land Office for 1280 acs of land.

Said survey is situated in Travis County
 about miles N W from Austin,
 on the waters of Cross Creek,

Beginning at the N.E. Corner of the Francis
 Harris survey

Thence S $3\frac{3}{4}$ W with the E line of said survey
 1200 varas, a stone mound

Thence S 85° E 800 varas stone mound.

Thence N $3\frac{3}{4}$ E 1117 varas stone md.

Thence N 120 varas to the S Corner of the D. A.
 Hampton survey.

Thence N 60° W 485 varas to S.W. Cor said Hampton

Thence N 10° E 1200 varas to another cor said Hampton

Thence N 33° E 520 varas the north cor same.

Thence S 60° E 440 to E cor. same

Thence S 15° W 240 varas stone mound on Hampton's
 east line

Thence N 85° E 500 varas the S. corner of Rich-
 ard Blackwell survey

Thence N 30° W 942 varas W cor of said Blackwell

Thence N 60° E 1930 varas to Drapers N. Corner.

Thence N $27\frac{1}{2}$ W 168 varas stone md on west
 line of I. & S. N. R. R Co no. 179.

Thence N 2452 varas stone md on
 R Cravens E line.

Thence S 30 W 746 was Cravens S. Corner,
 Thence N 60 W 404 was Stone md
 Thence S 35 E 115 was the corner of Bardsley's
 Thence S 30 1/2 W 693 was to another corner
 of Bardsley survey,
 Thence S 45 W 402 was to corner of said
 Bardsley on Colliers line -
 Thence S 30 E 205 was Colliers W corner,
 Thence S 44 W 1030 was stone md on
 Jeremiah Gregg's North line,
 Thence S 80 E 488 was to Ballards N.E. cor,
 Thence S 10 W 470 was Ballards S.E. Corner,
 Thence N 80 W 307 was Stone md on Gregg's line,
 Thence S 10 W 170 was Scott + Gregg's corner
 Thence S 60 E 940 was to Scott's corner on
 W line of the Harris survey,
 Thence N 5 W 130 was Harris N.W. cor,
 Thence N 85 E 860 was to the beginning
 surveyed 1 day of April 1886.

D. L. Wheeler

Bony Bilbery } Chairman

I Jno E Campbell Surveyor
 Travis County do hereby cer-
 tify that the foregoing survey
 was made according to law
 on the ground that the courses
 & bearings are true & correctly
 described in the foregoing field
 notes - making same variation
 from the calls in the old sur-
 veys.

Examined & Recorded
 in Book # Page 404 + 5
 May 10 1886

Jno. E. Campbell
 Sur Travis Co Tex

③
File 1521.
Travis Scrip
S. Mayford.

Corrected
F/mater
w:

File May 10/86
Det Robinson
Chief.

~~Cancelled by
corrected folder~~

comut 1376 am
may 14/86
JMN

State of Texas
County of Travis }

Survey No. 54

Corrected field notes
of a survey of ~~1280~~¹⁴⁴¹ acres of land made
for the State by virtue of Con-
federate Scrip No. 16 issued on the
1 day of Aug 1861 to S Hayford
by the Com'r Gen Land Office, for
1280 acres of land

Said survey is situated on the waters
of Cross Creek in Travis County about
miles N W from Austin

(beginning) at the ^{South} Corner of the
James Sylvester Preemption Survey,

Thence N 30 E 340 rods a corner of Garbo's,

Thence S 60 E 400 rods to the N cor of the Rich-
ard Craven's Preemption Survey

Thence S 30 W 950 rods N cor same.

Thence S 60 E 75 rods with Craven's line
a corner of Bardsley's line.

Thence S 55 W with Bardsley's line 730 rods
a corner on Collier's line.

Thence N 30 W 85 rods Collier's N. cor.

Thence S 40 W 750 rods to Collier's W corner,

Thence S 25 E 1705 rods Collier's S corner.

Thence S 44 W 179 rods stone md on
Greggs N. line

→ Thence N 80 W 1230 rods to Greggs N. W. cor

Thence S 55 W 1340 rods Hearts S. W. cor.

Thence S 35 E 1164 rods Hearts South cor.

Thence N 55 E 1340 rods Hearts N. E. cor.

Thence N 35 W 256 rods Hearts cor on Greggs
South line

Thence S 80 E 481 vs. Scotts Corner,
Thence S 30 W 687 to Scotts S.W. Corner,
Thence S 60 E 1496 vs to Scotts S Cor.,
Thence S 45 W 400 vs Stone rd on
 Leavitts West line.

Thence N 60 W with D + W No 104, to
 1800 vars to N cor same

Thence S 55 W 880 vs Stone rd.

Thence N 35 W 344 vs Stone rd.

Thence N 60 W 1600 vs the S.E. Corner
 of D + W. No 105.

Thence N 30 E 1900 vs to N.E. Corner same.

Thence S 60 E 407 S.E. Cor D + W No 105 -

Thence N 30 E 1900 to N.E. Corner same.

Thence S 60 E 666 vs Stone rd

Thence N 30 E 1414 vs Stone rd on
 S.W. line James Sylvesters.

Thence S 60 E 640 vs to Requirings
 Surveyed on the 1 day of April 1886
 D & Wheeler

Boury, Bilberry } Chairmen

I Jno E Campbell Surveyor
 Travis County do hereby certify that
 the foregoing survey was made
 according to law - on the
 ground, that the corners &
 bearings are truly & correctly
 described in the foregoing
 field notes - making some va-
 riation from the calls in the
 old surveys,
 returned & recorded in Book H
 page 408.

Jno E Campbell
 Sur. Travis Co, Tex

X 0 1

6
File 1521.
Travis Scrip
Hayford

Corrected

ff/moty

1441

n^o 54

File May 10/86

DCP Robinson

2 Chiffault

(School)

May 10/86

Correct on map
of Travis County

for 1441 acres.

June 11/86. mis

C. Couderc

surrounded

1521 Travis S.

Correct for 1441 acres

May 14/86

by Walker

by Walker

by Walker

by Walker

State of Texas }
County of Travis }

Survey No. 53

Corrected field notes
of a survey of 1280 acre made for
S Hayford by virtue of Confederate
Scrip No 186 issued to said Hay-
ford on ~~1st~~ of Aug 1881
by W. B. Walsh Comr Gen Land Office
Said survey is situated in Travis
County on the head waters of Cross
Creek about $17\frac{1}{2}$ miles $N^{34}W$ from
Austin

Beginning at the N.E. Corner of
the Francis Harris, survey, No. 516

Thence $S^{34}W$ 513 rods stone md on East
line of said Harris survey.

Thence $S 85 E$ 800 rods stone md on
~~West~~ line of E. T. R. & Co No 54.

Thence $N 3\frac{3}{4} E$ 430 rods stone md

Thence $N 20$ rods to the S.E. Corner of J. A. Hamp-
tons survey

Thence $N 60 W$ 485 rods to the S.W. Cor of Hampton

Thence with said Hamptons line $N 10 E$
1200 rods to his corner,

Thence $N 33 E$ 520 (with line of same to
his ~~North~~ Cor

Thence $S 60 E$ 440 rods to said Hamptons N.E.
Corner

Thence $S 15 W$ 240 rods stone md on
Hamptons East line.

Thence $N 85 E$ 500 rods ~~to~~ R. Blackwells S. Cor.

Thence $N 30 W$ 942 rods Blackwells ~~N~~ Cor.

Thence N 60 E 1930 us with Blackwell's and Drapers lines to Drapers North Cor.

Thence N 27½ W 168 us stone md on West line of G. B. & S. F. No 179.

Thence West 2452 us stone md on East line of the Richard ^W Crauen ^{Crauen} of preemption

Thence S 30 W 746 us stone md in the South of Crauens: ~~Bardsley's~~

Thence N 60 W 454 us stone md in South line of Crauens + in ^{Bardsley} Bardsley's lines

Thence S 35 E 115 us Bardsley's cor.

Thence S 30½ W 693 us another cor same.

Thence S 45 W 402 us another cor same on line of the Collier survey

Thence S 30 E 205 us Collier's corner

Thence S 44 W 1030 us (passing Collier's cor at 851) stone md on Gregg's line

Thence S 80 E 488 us cor of the — sur

Thence S 10 W 470 us to S.E. cor same

Thence N 80 W 307 us cor on ^J Gregg's line.

Thence S 10 W 170 us the S cor of Gregg sur.

Thence S 60 E 940 us with Scott's ^{North} line to his N E cor on Harris' West line

Thence N 5 W 130 us to Harris' N cor

Thence N 85 E 840 us with Harris' line to the place of beginning, surveyed April — 1886

Bony Billings
 Wheeler & Chaddock,

I Jno E Campbell County Surveyor do hereby certify that the

en'

foregoing survey was made
according to law in the field
and that the corners & bearings are
truly and correctly described in
the foregoing field notes - making
some variations from the
calls in the old surveys.

Wm. L. Campbell

County Surveyor Travis Co.

Recorded in Book # 404

File 1521.
Travis Scrip
S. Hayford

Travis S-1521

S. Hayford

Corrected
Scrips
Filed May 20/86
W. Robinson

Subject
#53
Individual survey

Correct on map
of Travis Co.
June 11/86

W. Robinson
Outlets July 12/87
Quinn

Hayford
Robinson

Robinson

May 21
J.H. 86

en 3

160112-3-1251

Brandon

Bigger

Morrow

This is the Colorado River

6188

Geo M Patrick

1150

93

1778

1400

3761

D + M
RACO
1/100 95

Ehren Kamp

Priest

Gilman

107

92

d + m
91

2277

1400

96 d + m

1400

Talk to
Billings

Hansley

98 d + m

105 d + m

106 d + m

Briggs

Cohen

C.T. + M.C.
Ryco

93 season

J +
Ylarbo

S. Hayford

d + m c

Sylvester

105 d + m

104

103

Collier

Bards

J.C. Cronas

3070

Hampton

Hamilton

S. Hayford

11 C.T. + M.C.
Ryco

C.T. + M.C.
Ryco

Leavitt

Leavitt

Harris

Hampton

Black
well

Dropt

Suttle

E.Ryco
54

E.Ryco
193

179

180

+

State of Texas
County of Travis

I Jno E Campbell
County Surveyor of Travis County
do hereby certify that the foregoing
attached sketch of the surveys
on the headwaters of Cross Creek
shows the true position of the
surveys as I found them on
the ground.

That the John Bilbey's survey lines,
on the ground run, N 50 W, S 50 W
S 60 E + N 30 E as shown on this sketch
The distance from the Garbo S W Cor
to the John Bilbey's E corner is 560 1/4
100. + S 30 W 80, and the John Bilbey West
corner is 560 E 238. + + 30 E 165 from the
corner of the Dallas + Wichita No 95
and the space between the John Bilbey's
preemption and D + W No 94 is
181 varas,

and that the D + W Nos 103 + 104
do not touch the Heart + Scott sur-
veys. I here refer to certified
sketch in Travis County
and make it a part of this sketch.

There is a slight conflict between
the Bardley and the Crevens survey

and the Gregg and A Ballard surveys
also in D & W No 104 and Benjamin
Leavitt sur.

This sketch and the Hayford field
notes makes some variation
from the calls in the original
field notes, and is as near cor-
rect as is possible to make
it in such a mountainous country

May 29th 1886

Jno. E. Mansfield,

Surveyor for
Travis County

nr-2

Nr 2

⑧ Fiv 15 21.

Trans Scrip

J. Mayford.

Certified

Sketch

& Explanation

Fri May 3, 186

Det Robinson

Infact.

NR3

NPE

VT3

Travel

52/17

Cert Sketch

+ Expl

May 31, 186

Return